



Vol. 17, No. 3

Newsletter of the Austin Scale Modelers Society

March 2009

SPRUE EXAMINER



ICM's 1/48th LaGG-3

by Milton Bell
IPMS #16702

Until ICM recently released their kit of the LaGG-3, the only other game in town was the Vector kit. Vector has at least two very nice Russian fighters in their stable of 1/48th kits, and some would argue that they are the most accurate. However, they are all resin kits and as such more expensive than some modelers can afford. ICM's kits are injected plastic, are affordable, and can be built by the average modeler.

But, before I get too involved in kit descriptions, here's a little background on the aircraft.

The LaGG-3 was developed early in the war by three designers whose last names were Lavochkin, Gudkov, and Gorbunov, hence the prefix LaGG. Their first design was the I-22, "I" meaning fighter. It became LaGG-1.

The war had forced the removal of all arms factories from the west to "east of the Urals." Since the war forced severe restrictions on the

availability of materials, the designers had to use what was at hand. Not only were materials in short supply, the pool of skilled labor was badly depleted. Farm wives became machinists, and old men had to learn engine building skills.

It would have been convenient if there had been a plentiful supply of aluminum alloys at hand, but this was not the case. So, many of the components were made of wood, in this case birch plywood, laminated with Bakelite or some other resinous material. This was used for much of the wing construction and the aft fuselage. Wings were usually covered in a final layer of doped-on fabric.

The result was a strong yet relatively light weight airframe. Like the MiG-3, the LaGG-3 looked like a winner and shared this basic construction technique. Looks can be deceiving however, and neither design lived up to expectations although the LaGG went through several variations.

The LaGG-1 suffered from a weak engine, a problem that was only partially solved in the

(continued on page 4)

ASMS is on the Internet

@

www.austinsms.org

Our Sponsors:



**Austin Armor
Builders Society**
www.austinarmorbuilders.com

AMC
AUSTIN MODEL CARS

[http://groups.yahoo.com/group/
AustinModelCars/](http://groups.yahoo.com/group/AustinModelCars/)



**IPMS-USA
Alamo Squadron**
www.alamosquadron.com

South Texas Auto Modelers

HobbyTown USA

2500 West Palmer Lane, Suite 80
Austin, TX 78727
Tel: (512) 246-8904
Email: hobbytownaustin@gmail.com



8810 N. Lamar Blvd
Austin, TX 78753
Tel: (512) 836-7388
Email: kinginfo@kingshobby.com
www.kingshobby.com



Email: wmbros@sbcglobal.net
www.williamsbrothersmodelproducts.com

Phil Brandt **Kachoris Family**

Dennis Price **Ion Tesu**

John Seaman **Rick Willaman**

Upcoming Events

Model Shows

IPMS/MCMA, Showdown #19, Irving, TX	March 21
IPMS/Tulsa, Tulsa Modelers Forum Open Contest, Tulsa, OK	March 28
IPMS/Flying Tigers, Great South Tigerfest XVI, Kenner, LA	March 28
IPMS/Houston, Modelmania 2009, Stafford, TX	April 4
IPMS/NCT, Scalefest 09, Grapvine, TX	May 30
Squadron EagleQuest XVIII (formerly MasterCon), Lewisville, TX	June 25-27

Air Shows

Bluebonnet Air Show 2009, Burnet, TX	April 11
South Texas Shootout 2009 ^[BA] , NAS Corpus Chrisiti, TX	April 17-19
Alamo Liaison Squadron Bluebonnet Picnic, Cannon Field, San Antonio, TX	April 25

[BA] USN Blue Angels scheduled to appear.

Local Events

Living History Program, Nimitz Museum, Fredericksburg, TX	March 14-15
Brent Mullins Open House, College Station, TX	March 20-21
Muster Day 2009 - American Heroes Celebration, Camp Mabry	April 18-19
Close Assault 1944! Camp Mabry	May 23-24



Support Our Troops!

In support of the initiative to provide model kits, supplies and reference materials to our servicemen and women serving in combat zones in Iraq, IPMS/USA has elected to have **SFC Steven DeLong** as the point of contact for **The Iraq Model Network**. Any individual, IPMS chapter, or industry supporter who wishes to make a donation, please send it to: **Baghdad Hobby Club, c/o SFC Steven DeLong, HQ, MNC-I (FSC), 18th Airborne Corps, APO, AE 09342**.

SFC DeLong can also be reached via e-mail at: steven.delong@iraq.centcom.mil



ASMS Officers for 2009-10


Mike Kachoris president, mjk005@excite.com	262-3404
Rick Herrington vice president, lehr3@sbcglobal.net	259-8565
Angela Forster treasurer, agforster@aol.com	331-4644
Eric Choy secretary & editor, asmsnews@austin.rr.com	249-9184
Mike Gilsbach webmaster, mike@gilsbachdesigns.com	
Kenny Roady show coordinator, asmscon@swbell.net	260-2907
Kathy Roady vendor liason, asmsvendors@swbell.net	260-2907
Milton Bell IPMS/USA coordinator, mbell6@austin.rr.com	454-2395

Austin Scale Modelers Society (ASMS) is affiliated with the International Plastic Modeler's Society (IPMS) as the Republic of Texas Chapter. ASMS meets the second Tuesday of each month except December. Dues for full membership are \$20 yearly. The views expressed in this newsletter are those of the authors. ASMS does not endorse the contents of any article.

Mike's Montage...

Mistakes. Mistakes are made all through our lives. We make them at work, in our relationships, working with computers, and even in modeling. I made my latest one while I was writing this month's column, I started it at work, and as I put the finishing touches on it at home, I lost the document with a simple mistake. So instead of taking my frustration out by smashing the computer, I'm venting with what you are reading now to channel my thought processes in another direction. I did learn from my mistake, and it won't happen again.

The same can be true in our hobby. Who has not made the mistake of gluing their fingers to their models, or you noticed that you forgot to add that piece to the inside of the model when you are just about finished? Whatever it is, try not to throw your model across the room but ask yourself: what did I learn, and how can I do it right the next time.

Some or maybe all the great modelers made mistakes in the past with their projects. But they learned from it and turn out beautiful work. You too can aspire to be a good model builder by learning from yours and others mistakes. So get back to that model you set aside and finish it! 

Mike



My Ex-Girlfriend's Mother Is A Vampire!

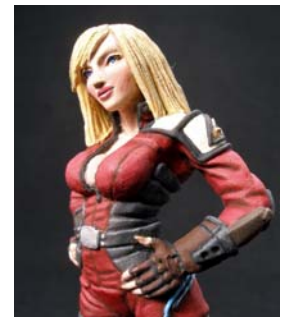
by

Eric Choy, IPMS #44323
and Lots of Help from Bob Bethea

As you all expected, my relationship with Dana ended in tears. I came to find out she's a dog person, and I'm not. I also thought she is kind of "shallow" (i.e. not enough shadows and highlights). But the straw that broke the camel's

back was when I discovered her mother Jahenna is a vampire!

Earlier on before I found out she really sucks, I tried to impress Jahenna with a Reaper rendition (#02632) of her "night out" look. Since this was my first miniature I finished, I showed it to our friend Bob for critique and improvement.



72mm Dana Murphy.


Ever since the recent episode with blood sucking docs in Houston, Bob now knows how to spot a vampire, especially one with a intern surgeon id badge. Here are some pointers Bob gave me on painting really small figures:

- Don't pay too much attention to painting the eyes. With the figure this small, they'll be hardly noticeable.
- The smaller the figure, the more you need to accentuate the shadows and highlights.
- You can run a lighter tone wash of the color you just painted to help blending. Here's an example of how you use it to paint the "wet T-shirt" effect of skin showing through the clothing like the fabric is translucent. First, paint the clothing and do the shadows. Then paint the areas where the clothing is "wet" against the skin with fresh color. Now run a lighter tone wash of the fabric color over it. Finally, do all the highlights with your fabric highlight colors.

The base I made was a 1" backgammon checker I picked up at a local game store for 33¢. I filled it with epoxy putty to bury the "broccoli" base that came with Jahenna. Graveyard dirt (railroad ballast of various sizes) were added to blend with the existing metallic "broccoli crowns."

To give the edge of the checker base a stoney look, I decided to give Krylon *Make It Stone!* textured paint a try. Thinking all rattle-can sprays behave the same, I test-sprayed a wooden block and watched in horror everything behind the block was covered in multicolor blobs! The paint came out of the nozzle in a splatter pattern, and unless you trap the overspray with something, you'll end up creating a royal mess like I did. So the second time around I placed a plywood board behind to block the overspray. Well, this stuff works, and my wooden checker now looks convincingly like granite!



Jahenna was quite taken by my work when I showed her what I had done. She wanted to give me a kiss, but I politely declined and fled. That was the last time I saw her and Dana... 

Eric

(ICM's 1/48th LaGG-3 continued)

next version, the LaGG-3. The newer engine, a 12 cylinder liquid cooled "V," produced 1180hp. This new LaGG had larger fuel tanks, wing slats to improve low speed control, and upgraded armament which included rockets or bombs. In turn, the airframe was redesigned and lightened.

In 1942, a LaGG-3 was fitted with an Ash-82 radial engine and designated the LaG-5 (one "G") and became the precursor for the La-5, a very successful fighter.

Still, the LaGG-3 soldiered on, overmatched much of the time. But with good pilots they took their share of victories.

They were also active during the short war with Finland. Three LaGG-3s were recovered by the Finns who repaired them and put them into their own service.



The Kit

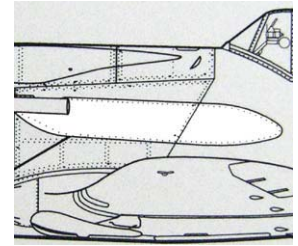
This is surely one of ICM's best efforts. Exterior detail is engraved, and the cockpit has ample detail in the form of very small injected details such as the throttle quadrant, trim wheels, oxygen regulator, etc. The seat isn't great but is certainly usable with a little clean-up. All it needs is a slot for the shoulder harness. The instrument panel is part of the clear sprue, and there is a decal for the instrument faces. The cast in details are not well represented and will be difficult to dry-brush.

Construction

Construction is pretty basic; two fuselage sides that trap a cockpit floor and radiator plus tailwheel. The forward cowling is offered in two versions. It may take a little research to determine which to use.

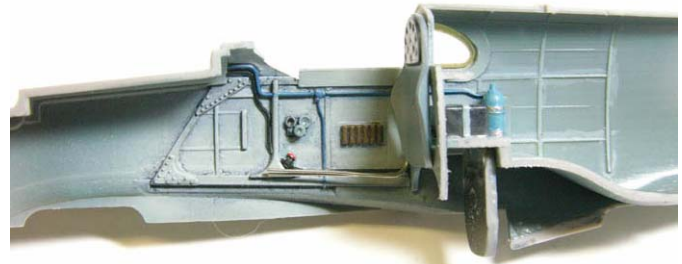
The kit box says the model may be built as either a Series 1 or Series 4. Actually, the kit has features of both which of course is wrong. So, you have to decide if you want a reasonably accurate -1 or -4. The wing root intakes are definitely -4. They are small rectangle shaped openings. The -1 had larger oval openings. Making the change was too involved for me. The -4 had a very thin stainless steel plate down the fuselage side that protected the airplane from the engine exhaust. The shape is for a -1, not a -4. But the detail is shown as a raised section that is easily sanded down with a medium grit sanding stick. I chose the latter and had the sanding done in about five minutes.

I used a pattern from a drawing which I reduced to 1/48th and cut two pieces from very thin plastic sheet. If you want to try it, I've included a full sized pattern.



This is the easiest correction I've had to make in a long time.

Now back to the cockpit interior. Since there is the option for showing it open, you can see a lot of "stuff." The interior for Russian aircraft of this era is generally a Medium Blue-Gray that is very close FS 26293.



Eduard now makes a Zoom set for the LaGG-3. I have a photo of a LaGG-3 that shows a light colored instrument panel, but it now appears that this is a rebuilt LaGG restored by the Finns. Eduard's panel is black. The panel is basically the same as that used in the La-5, so I used that part from the La-5 Zoom set but repainted it Blue-Gray. My error. However, if I get a chance to do a Finnish LaGG, I know how!

There are numerous other small parts on the Eduard PE sheet that can be used, but many of the injected parts will work just fine. It's the builder's choice.

One more word about the cockpit details. I noticed that there were numerous cables and wiring evident in photos that I should attempt to show. I did this with very small gauge copper wire that I primed and painted. It's not much, but it helps "busy" up the area. I used Gator's Glue to hold it in place as I did with the PE details.



ICM has designed the quarter windows to be installed before the fuselage halves are joined. This may be a problem when sanding the seam. So, remember to dip them in Future and let them dry well before mounting them. Once mounted, be sure you mask them good to prevent scratches and seal the cockpit area to keep dust from collecting on the inside.

As mentioned earlier, the tail wheel is trapped between the fuselage halves. To tell the truth, I hate to have landing gear

struts protruding from assemblies that still require sanding and possibly filling. They are just in the way and are likely to be damaged or broken. That's no fun, so I Dremeled out a couple of grooves in the bosses that hold the tail wheel so I could insert it after the fuselage was finished. It was a little touchy, but I got it in place and securely glued in.

The main gear fits pretty well and looks realistic. I added brake lines but they are all but hidden by the LG door covers.



The wings to fuselage isn't perfect, but it's pretty good. The only filling and sanding was on the underside around the radiator. The wing root seam was filled with some brushed on Mr. Surfacer, then wiped down with Mr. Color Thinner. Alcohol would work too; it just takes longer.

The sliding portion of the canopy is just a little small to fit over the quarter windows and fuselage, so I vac-formed a new one with my faithful old Mattel.

I installed my own combination of brass tubing to make the prop easier to install and to allow it to rotate, a handy thing for transporting. It's a simple process that I won't go into here.

Painting

As to the finish, I used a coat of Mr. Surfacer 1000 thinned with Mr. Color Thinner as primer. I used Dark Aluminum Alclad to



paint part of the lower fuselage around the fuel tanks and engine. Then the lower surfaces were painted with Polly Scale Underside Russian Blue, darkened slightly with a bit of Neutral Gray. This dulls the blue and looks more like a used aircraft. I chipped off some of the blue around hatches and seams to allow the Alclad to show through.



I chose to finish the model as a Series 4, Guard Fighter Regiment at Leningrad in the Spring of 1942. This meant winter camouflage, which was a white paint applied over the regular pattern of black and dark green. Rather than paint the entire model black and green, I painted only parts of the fuselage and wing roots. I used Tamiya Gloss White laid on in light, thin coats in the direction of the air-flow. Photographs show this airplane with a very "splotchy" paint job. It took some time get the finish balanced. Finally, the model got a coat of Future for decals and weathering.

Decaling and Weathering

The decals were a major disappointment. They have a flat finish, and the first one worked fairly well. Whenever I use decals from Eastern Europe, I use plenty of water to float the decals onto the model. Then I carefully position the decal and more carefully blot the excess water.

The second decal broke into several small parts and sent me digging into my box of decals scraps. I finally found a replacement and then turned back to the kit markings. I decided to apply two coats of Liquid Decal Film to each mark, and this seemed to work.

Weathering was done with Burnt Umber oil paint dissolved in Turpenoid. Exhausts were drilled out, primed and given a coat





of Alclad Dark Exhaust. After they were installed, MiG pigment Rust was brushed on and blended with Turpenoid.

As usual, I replaced the plastic antenna mast with a wooden one made with a toothpick and a lot of sanding. Believe me, this kind of mast will not be pulled or bent from over-tightened antenna wires! For the wires I used black "Sulky Invisible" nylon thread.

Next, I'll have to build a display base with a proper "snow" finish to display my LaGG.

It's a pretty good kit, perhaps not as accurate in all dimensions, but it certainly is a reasonable alternative to the much more expensive Vector kit. ICM has packaged several parts with their LaGG 3 that obviously will go with future kits. I'll be waiting to do one of the later Series versions, maybe even one in Finnish markings. ✈️

Milton

References

1. *Colors of the Falcons*, Jiri Hornat and Bob Migliardi, Iliad Design.
2. *Fighting Lavochkin*, Michael E. Alanshin, Aviation International.
3. *Red Stars Soviet Air Force in World War Two 1939-1945*, Carl-Fredrik Geust, Kalevi Keskinen, and Kari Stenman.
4. *LaGG Fighters In Action*, Squadron/Signal Publications.

International Plastic Modelers Society

MODEL MANIA

PRESENTS
Houston Area's Largest Model Show

- > Fine Scale Model Contest
- > Make & Takes for Youths
- > Technique Demonstrations
- > Vendors & Manufacturers
- > Guest Speakers
- > Exhibits & Displays

April 4th

Stafford Centre

10505 Cash Road
Stafford, Texas

Saturday: 9 am to 5 pm

www.ipms-houston.org

IPMS-Houston: a not-for-profit organization supporting & promoting the hobby of model building as an activity for the whole family



Amodel 1/72nd

"Buran" Space Shuttle Trainer BTS-02

Kit # 72-027, \$175 + Postage
Obtained from Linden Hill Imports

In-the-box Review by
"Bondo Phil" Brandt, IPMS #14091

The Soviet space shuttle program started earlier than that of the U.S., but the Buran shuttle didn't fly until late 1988, and any further flights were then suspended after that one successful unmanned sortie of two orbits. Program cancellation came in 1993. As in the case of the breakup of Soviet Union's military assets, the main cause was lack of funding.

Although the Buran orbiters appear identical and measure out very closely to NASA's shuttles, the Energia-Buran concept was designed to far surpass the performance and cost effectiveness of the U.S. program. For instance, the gigantic Energia boosters were all of the generally acknowledged less dangerous liquid fuel design, not liquid/solid as in the U.S. rocket grouping.

The heavy lift capability (with maximum strap-on booster configuration) of the Energia-Burans surpassed that of NASA's shuttles by at least a factor of five; the Buran didn't have booster rockets of its own (as opposed to U.S. shuttles), and thus had a larger cargo bay. In addition, the Energia core booster was designed to be reusable, as compared to the huge NASA shuttle central tank which is sacrificed on each mission. All strap-on Energia boosters were also designed for soft landings and reuse for ten missions.

Some eight Buran Space Shuttle test articles were scheduled to be built, but only one was for actual flight training. The subject of this latest Amodel kit, BTS-02, achieved some eight hours of flying time starting in 1984, and, with its four huge jet engines, was able to take off on its own, as opposed to the Space Shuttle Enterprise training article which had to be air-launched from a modified Boeing 747 and then glide in to a landing.

The original Buran that completed two orbits in 1988 was destroyed (along with its Energia booster) when the roof of the

hangar in which it was displayed (in Kazakhstan) caved in under fierce winds. After a display trip that included stops in Australia and Bahrain, the BTS-02 training article went back to Russia and then, finally, to the German aerospace museum Technikmuseum Speyer in 2004.

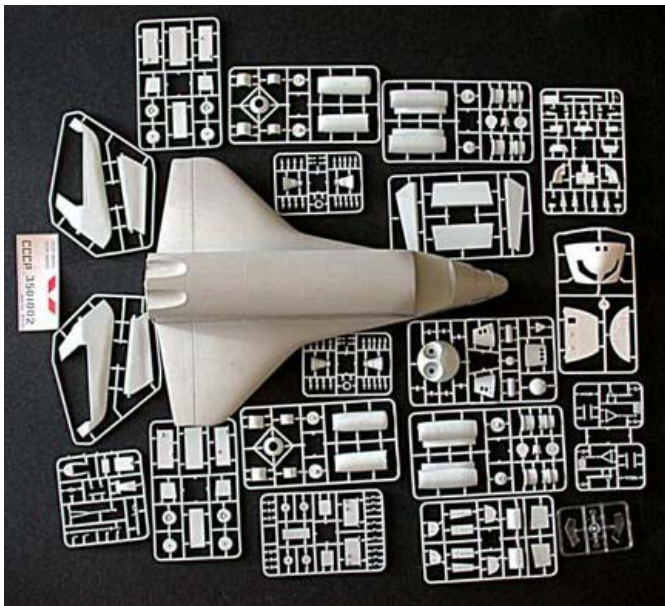
FirstLook

As is Amodel's custom when fabricating its "Amonster" series of large Soviet subjects, main components, in this case the entire airframe, is pre-fabricated of hand-laid polyester cloth impregnated with epoxy glass resin.

Other than adding various injected components such as the flight deck, jet engines, control surfaces and landing gear, the hard work is already done.

Molding

The pre-assembled airframe surface is relatively defect free, and engraving is petite and quite acceptable. Injected parts (many, see parts photo) are as usual cast in relatively soft plastic with, sometimes, too large spigots attached to small parts. But, hey, that's how it's always been with limited production Amodel kits; nobody said (modeling) life would be fair!



Details

The separate flight deck assembly is reasonably detailed, even though the windscreen area is small. Instruments are represented simply by small holes. Seats do not have molded-in or separate PE harnesses.

Jet engines have two-piece casings and separate compressor and turbine faces, and inlet block-off panels can be positioned open or closed. Many small actuators on the afterburner cans have to be cleaned up and laboriously added, but they'll add welcome busy-ness to otherwise plain assemblies.

Landing gear struts are well-detailed, with more individual pieces than are usually found in kits made in the West. Gear

wells are built-up, with little detail on the interior surfaces, not that there's that much in the real thing.

Fit

As with all A model kits, precise fit is, how shall I put it, not exactly Tamiyagawa-like, but then these kits are not targeted at "shake-n-bake warriors."

Clear Parts

Minimal, but well done. They are injected, not vacuformed.

Decals

Again, minimal, but that's the way high-heat shuttles/orbiters are done. They seem thin, but color and registration are good.

Instructions

No-text, with excellent exploded parts diagrams.

Conclusion

Another welcome eclectic addition to Amodel's lineup of Soviet/Russian subjects. Keep 'em coming! ✈

Bondo Phil

Reference

www.k26.com/buran/Info/energia_-_buran.html A very informative and colorful website.



*We have ways
to make you pay!*

*Save the
embarrassment
for later...*

Pay Your Dues NOW!

This is the last month to bring your membership status up to date. To avoid any interruption (or intrusion) from our guy shown here, please bring your dues (\$20 for individual, \$25 for family) to the next meeting. You can also write a check payable to ASMS and mail it to our treasurer:

**Angie Forster
1503 Black Cherry Drive
Cedar Park, TX 78613**

(Editor: Please excuse my poor taste humor. Your dues are much needed and appreciated.)

Modelfiesta 28 Highlights

Alamo Squadron hosted another wonderful show in Live Oak Civic Center on February 21st. Show attendees came as far as Louisiana and Mexico to attend the first Texas show of the year. Over 160 contestants participated with a total of 591 model entries. General admission was equally impressive: 610 bodies paid to get in to shop and admire all the contest models!

The show theme "Oldie Moldies" gave many modelers a chance to clean out their closets in search of 25+ years old kits to qualify for the theme build. Maybe that was the reason why I noticed the higher number of boxstock entries in all categories.

The resurrected Lone Star Military Miniature Society made its first show appearance since the late 1980s, and its display attracted a lot of attention, thanks in no small part to the increasing popularity of miniature gaming.

Here're some photos taken by your editor at the show.



Strange looking but very nicely done AMT/ERTL Star Wars Corporate Alliance Droid by Robert Leishman.



1/72nd WWII Soviet PE-2 by Gus Gonzalez.



Despite its size, Roy McCartney's Pavla 1/72nd Robins R22 Beta placed first in the Rotary/Tilt Wing category.



No show is complete without Bondo's "road less traveled" subjects. Here's Phil Brandt's latest: 1/48th Fairchild AC-119K Shadow.



This very nicely finished ProModeler Bf.110 G-4 Nightfighter by Rafael Gomez Lopez received a lot of attention, not to mention first place in the 1/48th Multi-Engine Prop category.



Henry Nuñez won the Best Figure Award with his Alpine 1/16th SS Panzer Grenadier, Ardennes 1945.



Excellent surfing dude figures by Ted Paone. It took Ted a while to convert Preiser 1/22nd figures into "Big Wave Dave" (top) and "Wild Man Jack" (bottom). The waves are blue insulation foam covered with plaster and AB putty.



Here's latest Civil War cannon from Russ Holm. This 1/35th 1862 CSA 32pd naval gun on a barrette placed third in the Larger than 1/48th Towed Artillery and Anti-tank Gun category.



Lyn Julian's 1/35 Flak36 won the Best Axis Armor award.



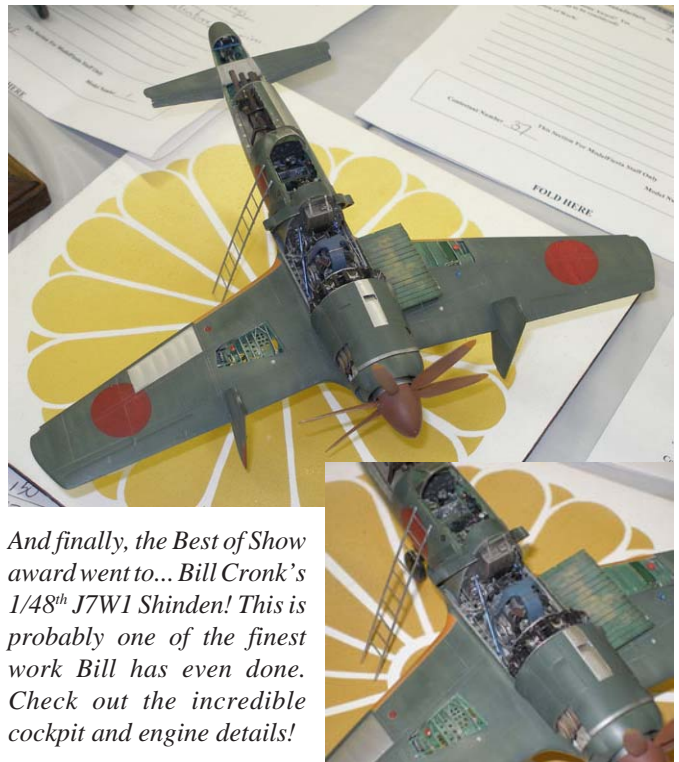
1/35th diorama titled "Achtung Jabo" by Roberto Enriquez (a.k.a. Bob Bethea y Henry Nunez).



Mike Picard took home the Show Theme ("Oldie Moldies") award with this old Tamiya 1/25th T-34/85 in Egyptian markings.



Richard Seay won first in the 1/401st & Smaller Power Surface Vessels category with this Fujimi 1/700th IJN Tone cruiser.



And finally, the Best of Show award went to... Bill Cronk's 1/48th J7W1 Shinden! This is probably one of the finest work Bill has even done. Check out the incredible cockpit and engine details!

Here is a list of ASMS members who won at the show:

Name	Place [Category]	Subject
Bob Bethea	1 st [Fantasy Figure ≤ 54mm]	28mm Bowman
	2 nd [Figure ≥ 120mm]	Mujahideen
	2 nd [Club/Group]	"Achtung Jabo"
	2 nd [Axis Armor >1/48]	Finnish T-34
Eric Choy	1 st [Figure Bust]	E. Rickenbacker
	1 st [Fantasy Figure >54mm]	Dana Murphy
	1 st [Armor 1/48]	Sherman III
Russ Holm	1 st [Allied Armor >1/48]	T-34/76
	1 st [ACs and APCs >1/48]	Autoblenda AB41
	1 st [Misc Mechanical]	Trebuchet
	2 nd [Armor Boxstock]	T-80
Bill Johnson	3 rd [Artillery >1/48]	Barbette 32pd
	2 nd [Allied Armor >1/48]	M24 Chaffee
	3 rd [Allied Armor >1/48]	Sherman III
Matthew Kupka	3 rd [Modern Armor >1/48]	M1A2 Abrams
	1 st [Pre-teen Misc]	Velociraptor
	2 nd [Movie/Action Figure]	Cartman As Cop
Dave Orloff	3 rd [Aircraft Origins to '37]	MS Type N
	3 rd [Multi Eng Prop 1/48]	Ki-46III Dinah
	3 rd [Vignette]	"Wild Man Jack"
Ted Paone		
Tim Robb	3 rd [Civil Aircraft]	Corben Super Ace
Pat Rourke	1 st [Modern Armor >1/48]	Egyptian T-34/85
Ion Tesu	1 st [Aircraft Jet 1/32]	MiG-21 Lancer
Keith Townsend	1 st [Movie/SF Figure]	1964 Godzilla
Special Awards		
Bill Johnson	Best WWII Allied Armor	M24 Chaffee

Old Rumors & New Kits

Spring is almost here and so are a bunch of new kits. It's not official, but I'm pretty sure it really is Spring in Central Texas. All I need to see are buds on my pecan trees, and it will be so. Time to build a model!

New kits in the shops include the all new Piper Super Cub in 1/32nd scale from Revell of Germany. Nice kit at an affordable price. The molding is very nice and crisp, and you can build the model in either US Army markings or in civilian colors. The Army version is, oddly, in Piper Yellow. The scalloped side window that is so evident on the civie cub is achieved by a decal or, I suppose, by masking if you want.

Hasegawa's 1/72nd E2C Hawkeye is still pretty new and looks like a real winner in the box. Be on the lookout for their brand new TA-4J sometime this month. This is probably the most wanted version of the Scooter since the first version appeared. I'm looking forward to doing one in Beeville markings. I did the old Fujimi kit this way years ago, but it was a far cry from what's available now.

Revell has released another version of the A/B-26 Invader. This is the old Monogram kit, but this time offered as a solid nose B Model. It will be good to have this one available again.

Revell AG has a couple of impressive models waiting in the wings. The should be here within the week. First is a really BIG model; a 1/144th scale USS Fletcher. I can only imagine the degree of detail some modelers will achieve and all the aftermarket details that will surely come.

Their other model is the 1/48th Mosquito B Mk. VI which I was told it is on the way to you LHS! I hear this kit will really challenge Tamiya's. It's priced at about \$37, which makes it very attractive in today's market.

Another big scale kit is already here. It's the Czech Model F-80. As far as I know this is the only 1/32nd scale kit of our first combat jet fighter. From what I've heard, the kit is well molded with ample detail, a smooth finish, and resin and PE details. It has been compared to kits done by Eduard. The colored PE instrument panel looks really nice. Many of the details are styrene, but seat, wheels, etc. are done in resin.

Super Scale — remember them? — has some new decals. The new sheet has markings for Nieuport 28s in 1/32nd and in 1/48th. Victory Decals has another BIG sheet, and this time it's for the 1/48th SB2C Helldiver. It includes markings for 17 aircraft! OK, so you don't want to build that many, but the ones you do want are probably included!

Fly Models has sent a restock of their Maachi M5 Flying Boat in 1/48th scale. This one comes in two boxings, one Italian and one Austro-Hungarian and Italian. Fly Models is a Czech

company and relatively new to aircraft kit production. These are very good kits.

The Airfix 1/48th TSR-2 is still new and looks good in the box. If you build it and need detail photos, I just happen to have some from a couple of years back. Give me a call.

Lion Roar, another new name, has offered a couple of 1/35th motorcycle and sidecar kits. The BMW R75 has been restocked. These kits have fantastic PE details, including cross-spoke wheels. You need to check these out even if you aren't a regular armor/vehicle builder.

Italeri has released a new tank kit, an Italian Carron Armato L-6/40. This tank was about the size of a Panzer I, but I know little more about it.

Revell is re-releasing their old Rommel's Rod. Guess they had too much styrene on hand.

There are several new books issued since the last newsletter. The series *Fighters Over Japan*, *Fighters of Germany*, *Fighters Over Britain*, etc. from Kagero have become my favorites. They usually contain some interesting pictures and a bonus decal sheet/mask for several of the featured subjects. The prices on the sticker may be a shock, but the decals are worth at least \$10.

The *F-111 Walk Around* from Squadron is still new, and if you are a fan of the Aardvark, you probably need it.

If you are interested in figure painting and want to see some inspiring work, check out *Advanced Figure Modeling* from Periscopio Publications. This has 178 pages of really fine figures from European modelers.

That's about all for March. Enjoy the warmer weather, but above all — build a model and come to the meeting. 🛩️

MB



Revell's new 1/32nd scale Super Cub is a good match for their earlier release 1/32nd glider kit. Large scale diorama, anyone?



In the latest issue of...

IPMS Journal

Jan/Feb 2009
Volume 21, Issue 1

• **From Hawaii to the Hedgerows** — The story of Jim Ashford and "Okole Maluna," by Chris Bucholtz;

• **Small Ship, Big Guns** — Scratchbuilding the Soviet river monitor *Udarnyi* in 1:700 scale, by Vladimir Yakubov;

• **Daunting or Dauntless** — Building a 1:48 vacuformed BT, by Gil Hodges;

• **Big Brick** — Building the rare and coveted Aerodynamix 1:32 Buccaneer, by Frank Mitchell;

• **Painting the Invisible Man** — H.G. Welles' tragic villain comes to life through Moebius' new kit, by Brad Hair;

• **Electronic Illusionist** — Converting a 1:72 Canberra T.17 with resin parts, by Tim A. Darrah;

• **A Jewel of a Jabo** — Building Eduard's latest offering in the world of Focke Wulf 190s, by Floyd S. Werner, Jr.;

• **Special Bonus: Train-Busting Thunderbolt** — Decals for Jim Ashford's "Okole Maluna" in 1/72, 1/48, and 1/32 Scales!

And much, much more!

By Modelers
— For Modelers®



Join IPMS/USA!

IPMS/USA is an organization dedicated to the fun of Scale Modeling. Started by Jim Sage, of Dallas, Texas, in 1963, there are now branches of IPMS all over the world.

As part of your IPMS/USA membership, you will receive *The IPMS Journal* six times a year. In it you will find stories of interest on subjects such as aircraft, armor, automotive, ships, and figures. You will also find listings of IPMS contests and swap meets, hints and tips, and reviews. Membership also qualifies you to participate in IPMS/USA sanctioned Regional Contests, as well as our world-famous National Convention, held each summer. As a member, you'll also be able to access our online **Member's Forum** where a wide variety of society and modeling topics are discussed. In addition, many hobby shops around the county offer **discounts** to IPMS/USA members.

To join IPMS/USA, simply use the form below or go to www.ipmsusa.org and click **Join IPMS/USA!** Payment may be made via personal check, money order, or credit card. Applications using Check or Money Order should be printed upon completion of the registration process and mailed to:

IPMS/USA
Dept. H, P.O. Box 2475
North Canton, OH 44720-0475

For any questions or problems with your membership application/renewal, please contact the IPMS/USA Officer Manager, Ms. M.J. Kinney, at manager@ipmsusa.org

IPMS/USA NEW MEMBER APPLICATION

IPMS No.: _____ Name: _____
(leave blank) FIRST M. LAST

Address: _____

City: _____ State: _____ Zip: _____

Phone: _____ email: _____

VISA/MasterCard _____ Account # _____ - _____ - _____

Exp. Date: _____

Signature: _____

Adult: **\$25** Junior (17 years old or younger): **\$12** **DOB:** _____

Canada & Mexico: **\$30** Other Foreign: **\$32** Foreign Air Mail: **\$55**

Family (Adult dues + \$5, one set magazines, # of membership cards required: _____)

If recommended by an IPMS member,
list his/her name and member number _____ (name) _____ (IPMS#)

IPMS/USA

P.O. Box: 2475
North Canton, OH 44720-0475

Check out our web page: www.ipmsusa.org

Next Meeting:
March 10th, 2009
at
Austin Terrazas Library
(1105 E. Cesar Chavez Street)

Program: *Quarterly Contest*
Theme: *Miniature Figures (54mm & Smaller)*



Austin Scale Modelers Society
Eric Choy
13213 Marero Drive
Austin, TX 78729

